



# CUSTOMER APPLICATIONS

## ATTREZZATURE SPECIALI

## APPLICATIONS CLIENTÈLE

## SONDERAUSRÜSTUNGEN

## APLICACIONES ESPECIALES



**CX330 HRD (High Reach Demolition)**



**CX460 Demolition**



**CX800 Demolition**



**CX130 Long reach**



**CX210B Long reach**



**CX240B Long reach**



**WX210 Series 2 Rehhandling**



**WX240 Series 2 Rehhandling**

Max height  
Altezza max  
Hauteur max  
Max Arbeitshöhe  
Altura max

Max reach  
Sbraccio max  
Portée max  
Max Reichweite  
Alcance max

Max dig depth  
Profondità max di scavo  
Profondeur portée max  
Max Grabtiefe  
Profundidad máxima

Attachment weight  
Peso attrezzatura  
Poids de l'équipement  
Gewicht Anbauwerkzeug  
Peso del equipo

Bucket capacity  
Capacità benna  
Capacité du godet  
Schaufelinhalt  
Capacidad cuchara

### Demolition

Model	Max height	Max reach	Max dig depth	Attachment weight	Bucket capacity
<b>CX330 HRD</b>	20.5 m	11.1 m	-	2500 kg	-
<b>CX460</b>	26 m	14 m	-	2500 kg	-
<b>CX800</b>	40 m	20 m	-	2500 kg	-

### Long reach

Model	Max height	Max reach	Max dig depth	Attachment weight	Bucket capacity
<b>CX130</b>	13 m	13 m	10 m	-	0,31 m <sup>3</sup>
<b>CX210B</b>	13 m	16 m	12 m	-	0,47 m <sup>3</sup>
<b>CX240B</b>	14 m	18 m	15 m	-	0,57 m <sup>3</sup>

### Rehhandling

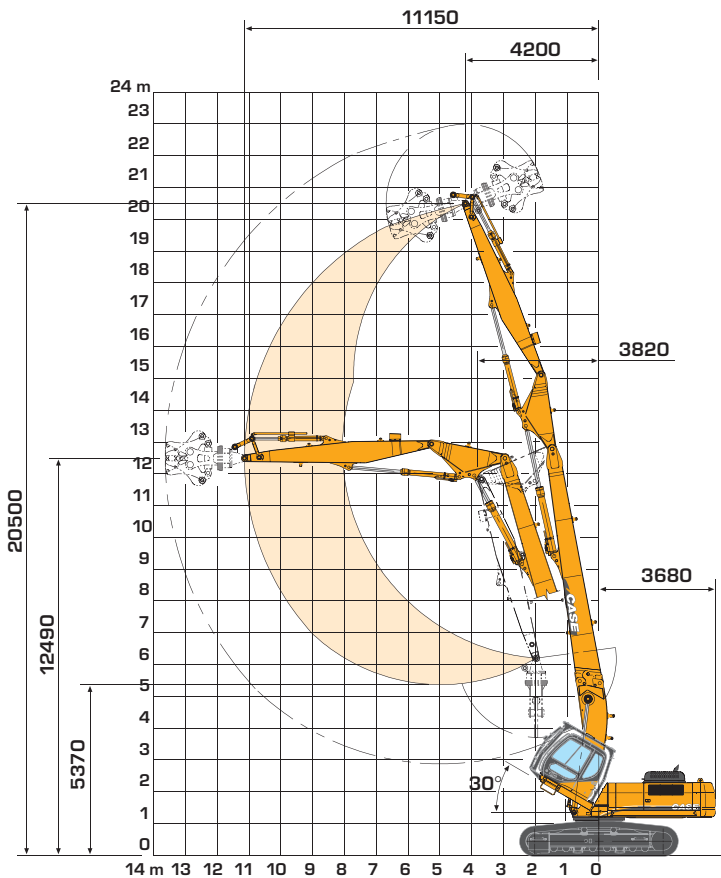
Model	Max height	Max reach	Max dig depth	Attachment weight	Bucket capacity
<b>WX210 Series 2</b>	13 m	12 m	4 m	1500 kg	-
<b>WX240 Series 2</b>	13 m	12 m	4 m	1600 kg	-

## HYDRAULIC EXCAVATOR

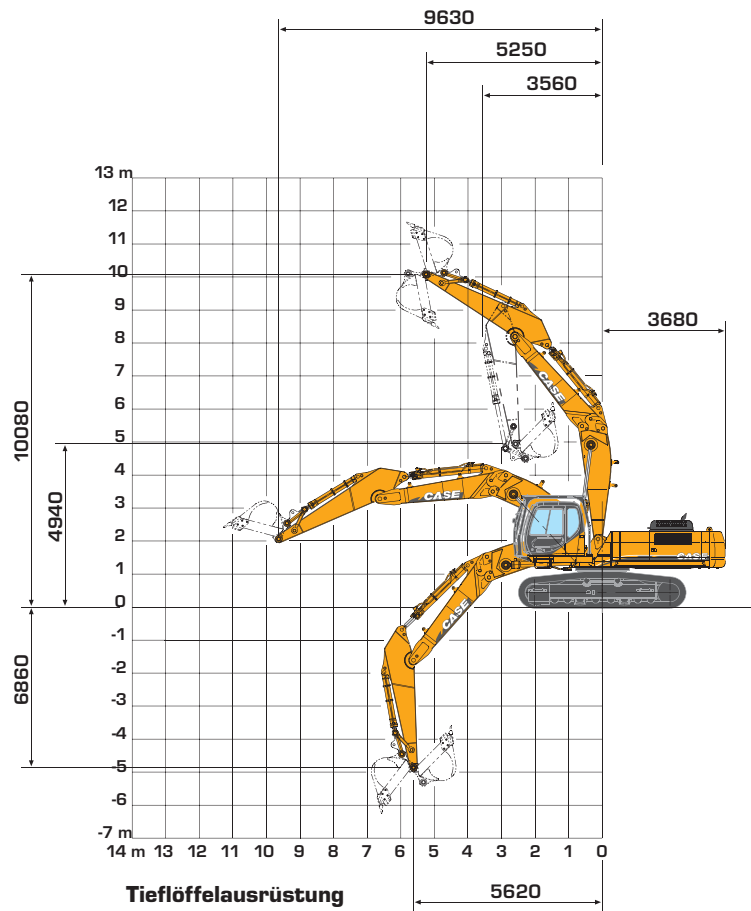
# CX330HRD

(High Reach Demolition)

### WORKING RANGE



Abbruchausrüstung



Tieflöffelausrüstung

		With Demolition equipment	With 3.25 dipper
Maximum reach	m	20.50	10.08
Maximum forward reach	m	11.15	9.63
Maximum attachment weight	Kg	2500	
Weight of the machine with demolition equipment (700mm tracks, full fuel tank, 2500kg crusher)	Kg	43.400	
Weight of the machine with backhoe equipment (700mm tracks, 3.25m dipper, 1170kg - 1,4m <sup>3</sup> bucket)	Kg		39.900
Swing radius (rear end)	m	3.68	3.68
Minimum swing radius (attachment)	m	3.82	3.56
Weight of the demolition equipment	w/o crusher	Kg	6.400
Weight of the backhoe equipment	w/o bucket	Kg	4.300
Digging force	w/o Power Boost	daN	16.390
	w/ Power Boost	daN	17.800
Breakout force	w/o Power Boost	daN	22.880
	w/ Power Boost	daN	24.840

#### HÖCHSTE FLEXIBILITÄT

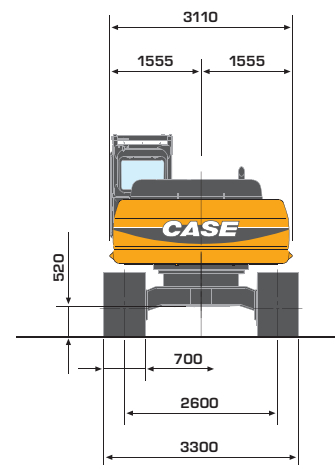
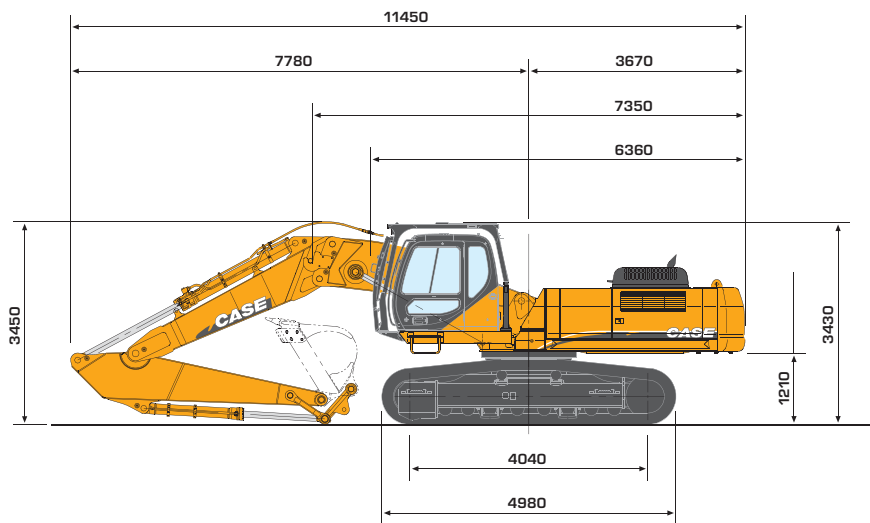
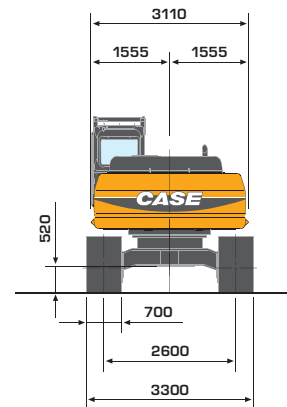
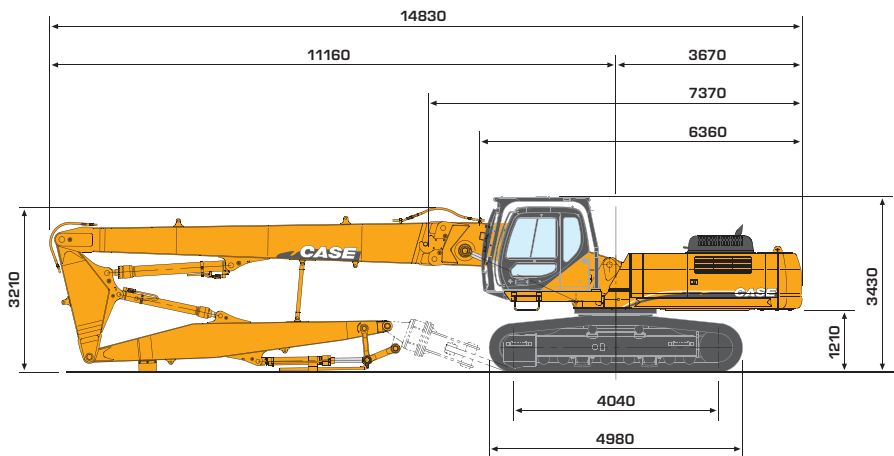
- 2 Maschinen in 1
- Mechanischer Wechsel mit zwei Stiften
- Hydraulik-Schnellkupplungen für alle Rohre und Schläuche
- Sehr schneller Wechsel zwischen Abbruch- und Tieflöffelausrüstung

#### LEICHTER TRANSPORT

- Abbruchausrüstung klappbar
- Kein Abbau der Abbruchausrüstung notwendig

#### MAXIMALE SICHERHEIT

- Kippbare Kabine für optimale Sicht und höchsten Komfort
- Arbeitsbereich permanent im Blick
- Hohe Standfestigkeit



## STANDARD EQUIPMENT

- Hydraulic tilting cab
- FOPS guards (Top and front)
- Boom angle warning lamp and Auto stop
- Dipper angle alarm and Auto stop
- Slew angle limiter
- Large tool box on chassis
- 700mm track width
- Air Conditioning
- Air suspension seat

### For Demolition Equipment

- Safety valves on boom, intermediate boom and dipper
- Low flow circuit
- Hammer / High flow circuit
- Bucket cylinder protection demolition attachment

### For Backhoe Equipment

- Safety valves on boom and dipper
- Low flow circuit
- Hammer / High flow circuit
- 3.25 m dipper

## OPTIONS

- Storage cradles
- Different track width (600 or 800mm instead of 700mm)
- Different dipper length for backhoe equipment (2.20m or 2.60m instead of 3.25m)

Standard and optional equipment shown can vary by country.

### Worldwide Case Construction Equipment Contact Information

**EUROPE/AFRICA/MIDDLE EAST:**  
Centre D'affaires EGB  
5, Avenue Georges Bataille - BP 40401  
60671 Le Plessis-Belleville - FRANCE

**NORTH AMERICA/MEXICO:**  
700 State Street  
Racine, WI 53404 U.S.A.

**LATIN AMERICA:**  
Av. General David Sarnoff 2237  
32210 - 900 Contagem - MG  
Belo Horizonte BRAZIL

**ASIA PACIFIC:**  
Unit 1 - 1 Foundation Place - Prospect  
New South Wales - 2148 AUSTRALIA

**CHINA:**  
No. 29, Industrial Premises, No. 376,  
De Bao Road, Waigaoqiao Ftz, Pudong,  
SHANGHAI, 200131, P.R.C.

**NOTE:** Standard and optional fittings can vary according to the demands and specific regulations of each country. The illustrations may include optional rather than standard fittings - consult your Case dealer. Furthermore, CNH reserves the right to modify machine specifications without incurring any obligation relating to such changes.

### Case Construction Equipment

CNH UK Ltd.  
Armstrong House  
The Finningley Estate  
Hayfield Lane  
Doncaster  
DN9 3XA  
Fax +44 (0)1302 802126

[www.casece.com](http://www.casece.com)

**CASE**  
CONSTRUCTION



Conforms to directive 98/37/CE